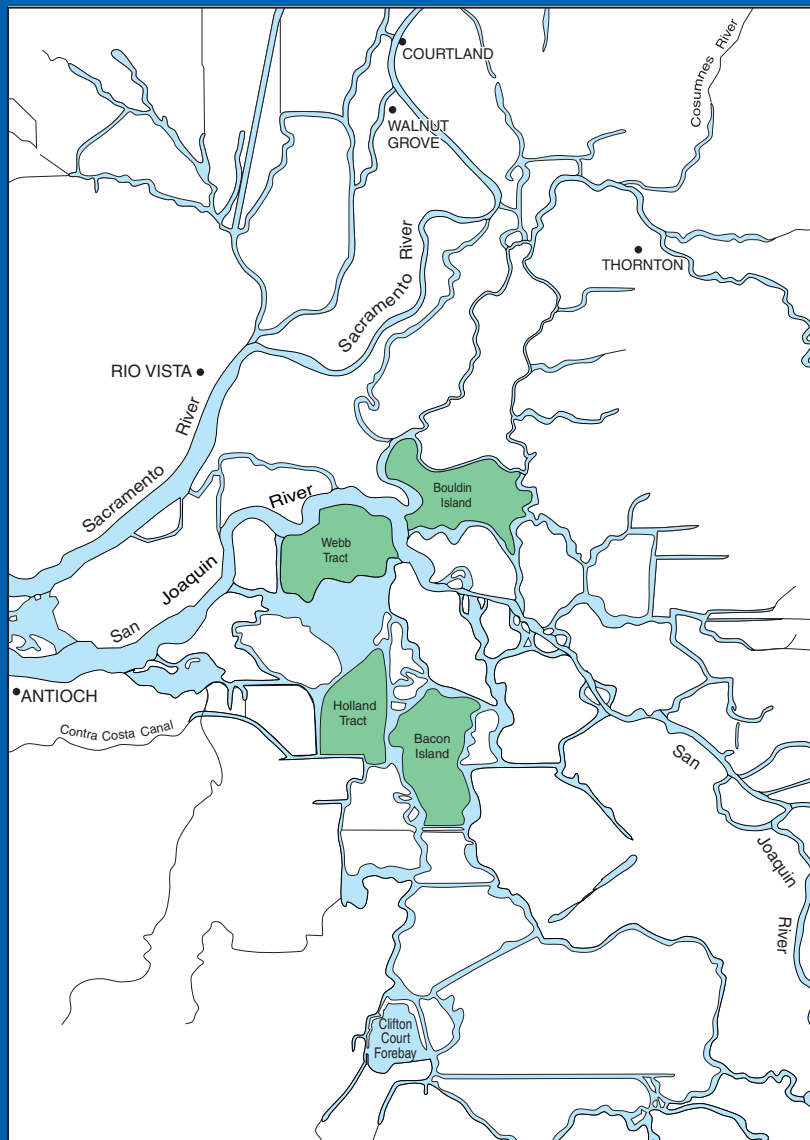


Final Environmental Impact Statement



July 2001

Delta Wetlands Project

Volume 2

Prepared for:



U.S. Army Corps of Engineers
Sacramento District

Prepared by:



Jones & Stokes
Sacramento, California

**Final
Environmental Impact Statement
for the Delta Wetlands Project**

Volume 2

Prepared for:

U.S. Army Corps of Engineers
Regulatory Branch
Sacramento District
1325 J Street, Room 1480
Sacramento, CA 95814
Contact: Mike Finan
Telephone: 916/557-5324

Prepared by:

Jones & Stokes
2600 V Street
Sacramento, CA 95818-1914
Contact: Aimee Dour-Smith
916/737-3000

July 2001

This document should be cited as:

Jones & Stokes. 2001. Final environmental impact statement for the Delta Wetlands Project. July. (J&S 99-162.) Sacramento, CA. Prepared for the U.S. Army Corps of Engineers, Regulatory Branch, Sacramento District, Sacramento, CA.

Volume 2 - Table of Contents

	Page
Chapter 1. Introduction to the Responses to Comments	1-1
Chapter 2. Master Responses: Discussions of Recurring Themes	2-1
Introduction	2-1
Master Response 1. Project Objectives: Analyzing Effects of Water Transfers, Banking, and Augmenting Outflow	2-2
Transfers and Banking	2-2
Use of Delta Wetlands Discharges to Provide Water for Outflow	2-3
Master Response 2. Integration of the Delta Wetlands Project with Federal and State Water Project Operations, including the CALFED Bay-Delta Program	2-4
Master Response 3. Areas of End Use and Potential Growth-Inducement Effects of Delta Wetlands Water Deliveries	2-5
CEQA and NEPA Requirements for Analysis of Indirect and Growth-Inducing Effects	2-5
Demand for Water and Potential End Uses	2-6
Growth Inducement	2-7
Master Response 4. Impacts on Fisheries Identified in the 1995 DEIR/EIS and Adoption of Biological Opinions	2-11
Biological Opinions Issued Pursuant to the Federal and California Endangered Species Acts	2-12
Summary of Impacts Identified in the 1995 DEIR/EIS and Biological Opinion Measures that Reduce Those Impacts	2-14
Master Response 5. Mitigation of Environmental Effects Related to Use of Recreation Facilities	2-20
Issues Addressed in the 1995 DEIR/EIS and the 2000 REIR/EIS	2-21
Effects of Boat Wake on Aquatic and Channel Island Habitat	2-22
Mitigation Identified in the Final Operations Criteria to Address the Effects of Boat Wake	2-23
Additional Mitigation of Potential Impacts: Reduction in Boat Slips at Recreation Facilities	2-23
Permit Requirements for Recreation Facilities	2-27
Conclusion	2-27
Master Response 6. Significance Criteria Used for the Water Quality Impact Analysis	2-28
Summary of Comments	2-28
Requirements for Establishing Significance Criteria	2-28
Significance Criteria Used in the 1995 DEIR/EIS and the 2000 REIR/EIS ..	2-29

Assumptions Used in Establishing the Significance Thresholds	2-30
The Distinction Between Significance Criteria and Mitigation Requirements	2-32
Impact Conclusions	2-32
Mitigation Requirements in the Delta Wetlands Project Water Quality Management Plan	2-33
Master Response 7. Analysis of Effects of The Delta Wetlands Project on Disinfection Byproducts	2-33
Summary of Issues	2-33
Results of the 1995 DEIR/EIS and 2000 REIR/EIS Analyses	2-34
Disinfection Byproduct Prediction Methods	2-35
U.S. Environmental Protection Agency Rules for Disinfection Byproducts ..	2-37
Economic Impacts	2-38
Delta Wetlands Project Water Quality Management Plan	2-39
Master Response 8. Levee Stability Analysis and Worst-Case Conditions	2-41
CEQA and NEPA Requirements for Analysis of Worst-Case Conditions ...	2-42
Levee-Stability Analysis Presented in the 2000 REIR/EIS	2-42
Recommended Mitigation Measures to Improve Levee Stability	2-45
Role of Final Design	2-46

Chapter 3. Comments and Responses to Comments on the 1995 Draft Environmental Impact Report/Environmental Impact Statement 3-1

Section A. Federal Agencies

A1. Advisory Council on Historic Preservation	3.A-1
A2. National Marine Fisheries Service	3.A-4
A3. Department of Health and Human Services	3.A-13
A4. National Oceanic and Atmospheric Administration	3.A-18
A5. U.S. Department of the Interior	3.A-24
A6. U.S. Environmental Protection Agency, Region IX (Wetlands and Sediment Management)	3.A-34
A7. U.S. Environmental Protection Agency, Region IX (Office of Federal Activities)	3.A-37

Section B. State Agencies

B1. Delta Protection Commission	3.B-1
B2. California Department of Boating and Waterways	3.B-5
B3. Northwest Information Center of the Historical Resources Information System	3.B-18
B4. California Department of Water Resources	3.B-20
B5. California State Lands Commission	3.B-22
B6. California Department of Fish and Game	3.B-31
B7. California Department of Water Resources	3.B-95
B8. California Department of Transportation	3.B-137
B9. California Resources Agency	3.B-147

Section C. Local Agencies

C1. Metropolitan Water District of Southern California 3.C-1
C2. San Joaquin County Community Development Department 3.C-3
C3. Shasta County Board of Supervisors 3.C-8
C4. San Joaquin Tributaries Association 3.C-10
C5. East Bay Regional Park District 3.C-14
C6. East Bay Municipal Utility District 3.C-16
C7. Bradford Reclamation District No. 2059 3.C-27
C8. Sacramento County Water Resources Division 3.C-39
C9. Contra Costa Water District 3.C-48
C10. San Joaquin County Department of Public Works 3.C-85
C11. San Joaquin County Community Development Department 3.C-90
C12. San Joaquin County Council of Governments 3.C-92
C13. Contra Costa County Community Development Department 3.C-97
C14. Metropolitan Water District of Southern California 3.C-113
C15. Ironhouse Sanitary District 3.C-159
C16. Reclamation District No. 830 3.C-170
C17. Central Delta Water Agency et al. (Nomellini, Grilli &
McDaniel) 3.C-176

Section D. Special Interest Groups

D1. Planning and Conservation League 3.D-1
D2. California Sportfishing Protection Alliance 3.D-3
D3. Shasta Lake Business Owners’ Association 3.D-8
D4. California Striped Bass Association 3.D-10
D5. Central Valley Habitat Joint Venture 3.D-13
D6. California Urban Water Agencies 3.D-16
D7. California Waterfowl Association 3.D-18
D8. Friends of the River 3.D-21
D9. California Sportfishing Protection Alliance 3.D-24
D10. California Native Plant Society 3.D-51
D11. Natural Heritage Institute 3.D-54
D12. The Bay Institute of San Francisco 3.D-62
D13. Marin Audubon Society 3.D-70
D14. California Urban Water Agencies 3.D-96

Section E. Individuals and Other Interested Parties

E1. Rob Fletcher 3.E-1
E2. George C. “Tim” Wilson 3.E-3
E3. Daniel M. Wilson 3.E-5
E4. Ellis M. “Steve” Stephens (Ellis Island Farms, Inc.) 3.E-7
E5. Leisha Robertson (D & L Farms) 3.E-9
E6. Kyser Shimasaki 3.E-12
E7. Earl W. Cooley (Medford Island Habitat Conservation Area) 3.E-15
E8. Paul and Liza Allen 3.E-17
E9. Peter Margiotta 3.E-26

E10. Robert C. and Jean M. Benson	3.E-32
E11. California-Oregon Transmission Project	3.E-39
E12. The Dutra Group	3.E-45
E13. William Shelton	3.E-47
E14. Delta Wetlands Properties (Ellison & Schneider)	3.E-50
E15. Pacific Gas and Electric Company	3.E-72

Section F. Public Hearing

F1. Roger Lefebvre (Shasta Lake Business Owners' Association)	3.F-16
F2. Paul Allen	3.F-17
F3. Kevin Wolfe	3.F-20
F4. Liza Allen	3.F-24

Chapter 4. Comments and Responses to Comments on the 2000 Revised Draft

Environmental Impact Report/Environmental Impact Statement	4-1
R1. California Department of Conservation	4-3
R2. California Department of Water Resources	4-8
R3. California Regional Water Quality Control Board, Central Valley Region	4-37
R4. California Urban Water Agencies	4-39
R5. California Waterfowl Association	4-62
R6. Central Delta Water Agency et al. (Nomellini, Grilli & McDaniel)	4-65
R7. Contra Costa County Community Development Department	4-84
R8. Contra Costa Water District	4-105
R9. Delta Protection Commission	4-147
R10. Delta Wetlands Properties (Ellison & Schneider)	4-152
R11. East Bay Municipal Utility District	4-196
R12. East Bay Regional Park District	4-207
R13. Ironhouse Sanitary District	4-210
R14. Metropolitan Water District of Southern California	4-213
R15. Natural Heritage Institute	4-216
R16. Pacific Gas and Electric Company	4-222
R17. Bob Raney (Bethel Island property owner)	4-227
R18. Reclamation District #830	4-230
R19. Bradford Reclamation District No. 2059	4-240
R20. State Water Contractors	4-245
R21. City of Stockton (McDonough, Holland & Allen)	4-248
R22. U.S. Department of the Interior	4-250
R23. U.S. Environmental Protection Agency, Region IX (Federal Activities Office)	4-256

Chapter 5. Citations for the Responses to Comments	5-1
PRINTED REFERENCES	5-1
PERSONAL COMMUNICATIONS	5-3
WATER RIGHT HEARING TESTIMONY	5-4

Appendix to the Responses to Comments:

National Marine Fisheries Service Biological Opinion for the Central Valley Steelhead

National Marine Fisheries Service Biological Opinion for the Central Valley Spring-Run Chinook Salmon

Protest Dismissal Agreement Between Delta Wetlands Properties and East Bay Municipal Utility District

Agreement to Resolve Certain Delta Wetlands Permit Issues Between Delta Wetlands and California Urban Water Agencies

Protest Dismissal Agreement Between Contra Costa Water District and Delta Wetlands Properties

List of Tables

	Page
2-1 Impacts Discussed in the 1995 DEIR/EIS Related to Recreational Boat Use	follows 2-24
2-2 Comparison of Recreational Vehicle and Boat Trip Generation (trips/day) for Alternatives 1 and 2 with and without a 50% Reduction of Boat Slips	follows 2-24
3-1 List of Comment Letters on the 1995 DEIR/EIS for the Delta Wetlands Project	3-2
4-1 List of Comment Letters on the 2000 REIR/EIS for the Delta Wetlands Project	4-2

List of Acronyms

1995 DEIR/EIS	1995 Delta Wetlands Project Draft Environmental Impact Report and Environmental Impact Statement
1995 WQCP	1995 Water Quality Control Plan for the San Francisco Bay/Sacramento–San Joaquin Delta Estuary
2000 REIR/EIS	2000 Revised Draft Environmental Impact Report and Environmental Impact Statement for the Delta Wetlands Project
Fg/l	micrograms per liter
FS	microsiemens
FS/cm	microsiemens per centimeter
af	acre-foot
AFRP	Anadromous Fish Restoration Program
CALFED	CALFED Bay-Delta Program
Caltrans	California Department of Transportation
CCMAD	Contra Costa Mosquito Abatement District
CCWD	Contra Costa Water District
CEQA	California Environmental Quality Act
cfs	cubic feet per second
COTP	California-Oregon Transmission Project
CPUC	California Public Utilities Commission
CUWA	California Urban Water Agencies
CVOCO	Central Valley Operations Coordinating Office
CVP	Central Valley Project
CVPIA	Central Valley Project Improvement Act
CVRWQCB	Central Valley Regional Water Quality Control Board
DBP	disinfection byproduct
DCC	Delta Cross Channel
D/DBP	Disinfection/Disinfection Byproducts
Delta	Sacramento-San Joaquin Delta
DeltaSOQ	Delta Standards, Operations, and Quality model
DeltaSOS	Delta Standards and Operations Simulation model
DFG	California Department of Fish and Game
DO	dissolved oxygen
DOC	dissolved organic carbon
DOT	U.S. Department of Transportation
DRB	design review board
DSOD	Division of Safety of Dams
DWR	California Department of Water Resources
EBMUD	East Bay Municipal Utility District
EC	electrical conductivity

E/I	export/inflow
EIR	environmental impact report
EIS	environmental impact statement
EPA	U.S. Environmental Protection Agency
ESA	Endangered Species Act
ESU	Evolutionarily Significant Unit
EWA	Environmental Water Account
FDM	Fischer Delta Model
FEIR	final environmental impact report
FEIS	final environmental impact statement
FMWT	fall midwater trawl
FOC	final operations criteria
fps	feet per second
FS	factor of safety for slope stability
g/m ²	grams per square meter
HEP	habitat evaluation procedures
HLA	Harding Lawson Associates
HMAC	Habitat Management Advisory Committee
HMP	habitat management plan
IEP	Interagency Ecological Program
ISI	Integrated Storage Investigation
km	kilometer
LAFCO	Local Agency Formation Commission
LOS	level of service
MAB	Reservoir Island Monitoring and Action Board
MAF	million acre-feet
MCL	maximum contaminant level
mg/l	milligrams per liter
msl	mean sea level
MWD	Metropolitan Water District of Southern California
MWQI	Municipal Water Quality Investigations
NEPA	National Environmental Policy Act
NMFS	National Marine Fisheries Service
NPDES	National Pollutant Discharge Elimination System
NRCS	Natural Resources Conservation Service
PG&E	Pacific Gas and Electric Company
ppt	parts per thousand
psi	pounds per square inch
RMA	Resource Management Associates
ROW	right-of-way
RPM	reasonable and prudent measure
RWQCB	regional water quality control board
SB	Senate Bill
SJCMAD	San Joaquin County Mosquito Abatement District
SLC	State Lands Commission
SMARTS	Special Multipurpose Applied Research Technology Station

SR	State Route
SWP	State Water Project
SWRCB	State Water Resources Control Board
TAF	thousand acre-feet
TAF/yr	thousand acre-feet per year
TDS	total dissolved solids
THM	trihalomethane
THMFP	trihalomethane formation potential
TOC	total organic carbon
TTHM	total trihalomethane
USACE	U.S. Army Corps of Engineers
USBR	U.S. Bureau of Reclamation
USFWS	U.S. Fish and Wildlife Service
USGS	U.S. Geological Survey
UVA	ultraviolet absorbance
VAMP	Vernalis Adaptive Management Plan
WQMP	Delta Wetlands Water Quality Management Plan
WTP	water treatment plant